



Part no.: 50124941
BTU 0300M-W
Mounting device

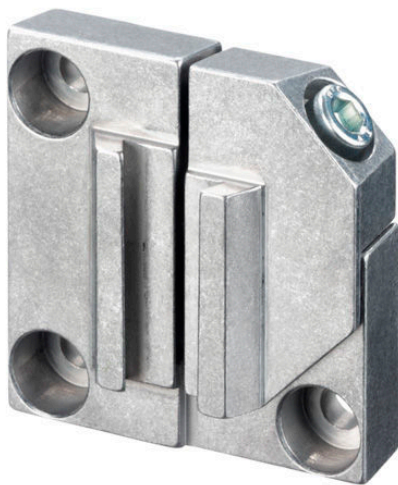


Figure can vary

Contents

- Technical data
- Dimensioned drawings



Part no.: 50124941 – BTU 0300M-W – Mounting device

Technical data

Basic data

Suitable for	Bar code positioning system, BPS 300i series
--------------	--

Mechanical data

Design	Cubic
Dimension (W x H x L)	55 mm x 57 mm x 14 mm
Standard designation, metal mounting device	Aluminum
Type of fastening, at system	Through-hole mounting
Type of fastening, at device	Groove mounting Clampable
Mounting device material	Metal

Classification

eCl@ss 8.0	27279202
eCl@ss 9.0	27273701
ETIM 5.0	EC002467

Dimensioned drawings

All dimensions in millimeters

